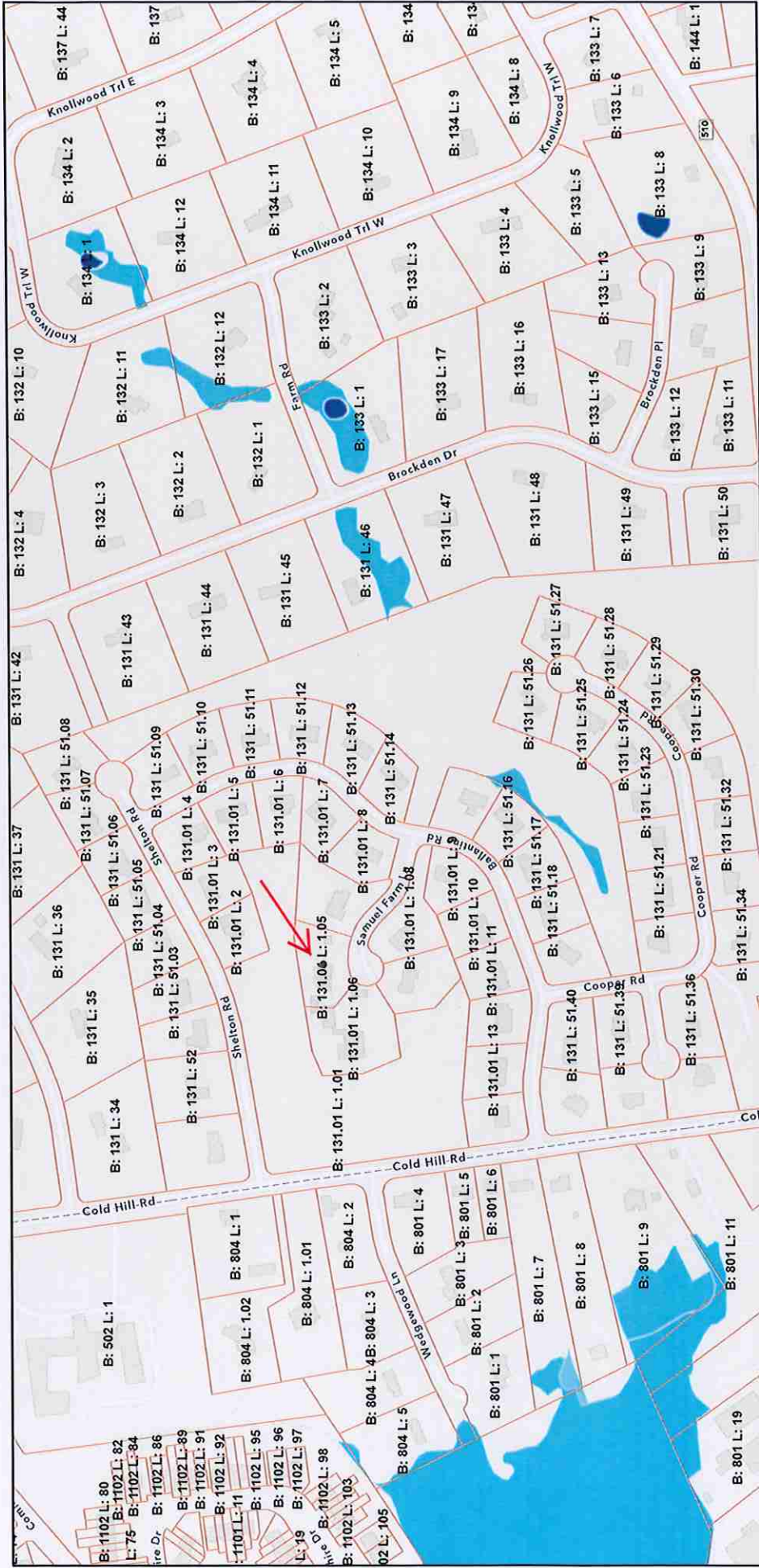


NJ-GeoWeb 3 SAMUEL FARM LANE



1/25/2024, 9:00:01 AM



Esri Community Maps Contributors, New Jersey Office of GIS, © OpenStreetMap, Microsoft, Esri, TomTom, Garmin, SafeGraph, GeoTechnologies, Inc, METINASA, USGS, EPA, NPS, US Census Bureau, USDA, USFWS

New Jersey Department of Environmental Protection
NJ Department of Community Affairs, Local Planning Services

Esri Community Maps Contributors, New Jersey Office of GIS, © OpenStreetMap, Microsoft, Esri, TomTom, Garmin, SafeGraph, GeoTechnologies, Inc, METINASA, USGS, EPA, NPS, US Census Bureau, USDA, USFWS

Parcels Data (Block and Lot)

Land Use Permitting Report

Freshwater Wetlands

PI Number: 1419-19-0003.1

Activity Type	Clock Status	Document Status	Elapsed	Applicant
FWL13 presence/absence LOI		Issued		PITNEY FARM DEVELOPMENT LLC PITNEY FARM DEVELOPMENT LLC

Activity Number	Assigned To Name	Task	Completed Date
FWW 190001	Bryant, Ramona	Application Administratively Complete	5/2/19
	Bryant, Ramona	Start Administrative Review	5/3/19
	Dunn, Margaret	Receive Fee	5/3/19
	Wair, Renee	Receive Application	5/3/19
	Bryant, Ramona	End Administrative Review	5/8/19
	Michniewski, Sue	Assign Project Manager	5/8/19
	Michniewski, Sue	End Technical Review	5/8/19
	Michniewski, Sue	Start Technical Review	5/9/19
	Michniewski, Sue	Site Visit	5/25/19
	Michniewski, Sue	*Request administrative information	7/1/19
	Michniewski, Sue	*Receive administrative information	7/9/19
	Michniewski, Sue	Complete Project Manager Review	7/10/19
	Michniewski, Sue	Verify Information in Activity Tracking	7/10/19
		Document issued	7/11/19
	Griko, Rebecca	***Absent - all	7/11/19
	Griko, Rebecca	Complete P.M. Supervisor Review	7/11/19
	Murray, Shawn	Scanned Letter	7/12/19
Murray, Shawn	Send letter	7/12/19	



Pitney Farm Estates Block 131.01 Lots 1.02 & 1.03

aka 3 Samuel Farm Lane