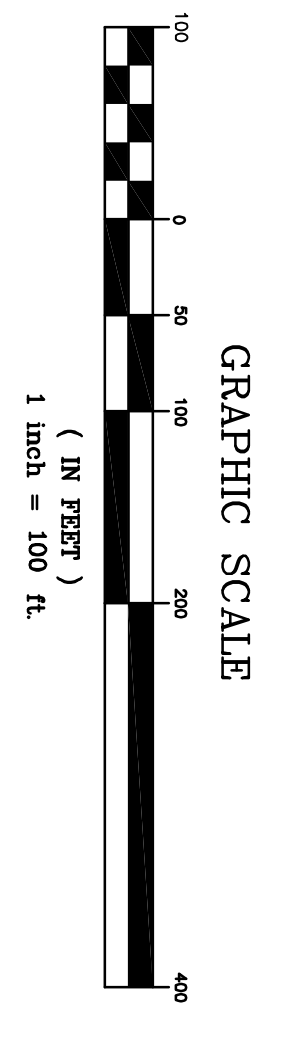


PLAN VIEW
(BLOCK 144, LOT 24)
(EAST SIDE)



NOTE: SEE PLAN SHEET 2 FOR ALL GENERAL NOTES.
NOTE: SEE PLAN SHEETS 2, 5, 6 & 7 FOR PROPOSED AREA OF CONSTRUCTION.

SOILS CLASSIFICATION AND ENGINEERING SOIL PROPERTIES					
MUD SYMBOL	SOIL SERIES	SLOPE	DEPTH TO BEDROCK	SEASONAL HIGH WATER TABLE	HORIZONTAL SOIL GROUP
A4	ALLUVIAL LAND	-	> 6 FT.	1 - 4 FT.	D
Cd	CLAYTON VERY STONY LOAM	2-4%	> 6 FT.	1/2 - 4 FT.	C
CdB	CLAYTON LOAM FRAGILE SUBSOIL VARIANT	3-4%	> 10 FT.	1/2 - 4 FT.	C
EaB	EMERYVILLE GRAVELLY LOAM	3-4%	6 - > 10 FT.	> 10 FT.	B
EaC	EMERYVILLE GRAVELLY LOAM ENDOG	6-14%	6 - > 10 FT.	> 10 FT.	B
EaD	EMERYVILLE GRAVELLY LOAM SEVERELY ENDOG	12-25%	6 - > 10 FT.	> 10 FT.	B

NOTE: SOIL INFORMATION TAKEN FROM SOIL SURVEY OF MORRIS COUNTY, NEW JERSEY BY U.S. DEPARTMENT OF AGRICULTURE, SOIL CONSERVATION SERVICE IN 1976, SHEET NUMBER 33.
NOTE: HYDROLOGIC SOIL GROUP FROM TURBAM HYDROLOGY FOR SMALL WATERSHEDS PUBLISHED BY SOIL CONSERVATION SERVICE, 1986.

YAMACCONNE & ALDRICH, LLC
Civil Engineers & Professional Planners
480 MAIN STREET, P.O. BOX 459
CHESTER, NEW JERSEY 07930
PHONE: 908-879-8848
FAX: 908-879-8891
N.J. STATE BOARD OF P.E. & L.S.
CERT. NO. 120647000

GREGORY E. YAMACCONNE, PE
N.J. PROFESSIONAL ENGINEER
NO. 39904 DATE 8/1/23

PROJECT TITLE:
**MENDHAM GOLF & TENNIS CLUB
& PRELIMINARY & FINAL
MAJOR SITE PLANS
PICKLEBALL COURTS PROJECT**
BLOCK 144, LOTS 20, 21, 22, 23 & 24
KENNEDY ROAD, GOLF & COREY LANES
TOWNSHIP OF MENDHAM
MORRIS COUNTY, NEW JERSEY

SHEET TITLE:
OVERALL SITE & ENVIRONMENTAL CONSTRAINTS PLAN (EAST SIDE)

NO.	DATE	REVISION
1	8/1/23	ISSUE

NOT VALID WITHOUT SIGNATURE AND RAISED SEAL	DATE
DRAWN BY:	AUGUST 29, 2022
CAD/GEY	
CHECKED BY:	SCALE
GEY	1" = 100'
NO.	208056
F.B.	
FILE:	
COMP FILE: W:\SERVIC\208056.DWG	
208056-FINAL SITE PLAN-REV.DWG	
SHEET 3 OF 7	