

**MORRIS COUNTY SOIL CONSERVATION DISTRICT
SOIL EROSION AND SEDIMENT CONTROL NOTES**
REV. JAN. 2008

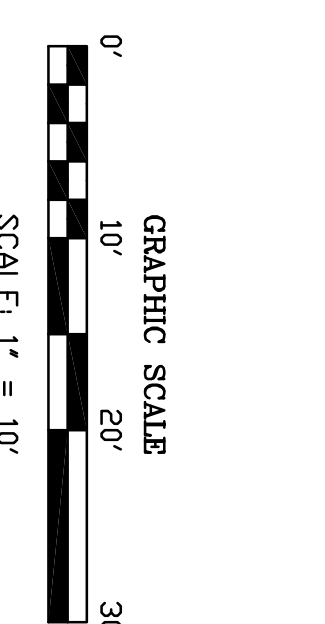
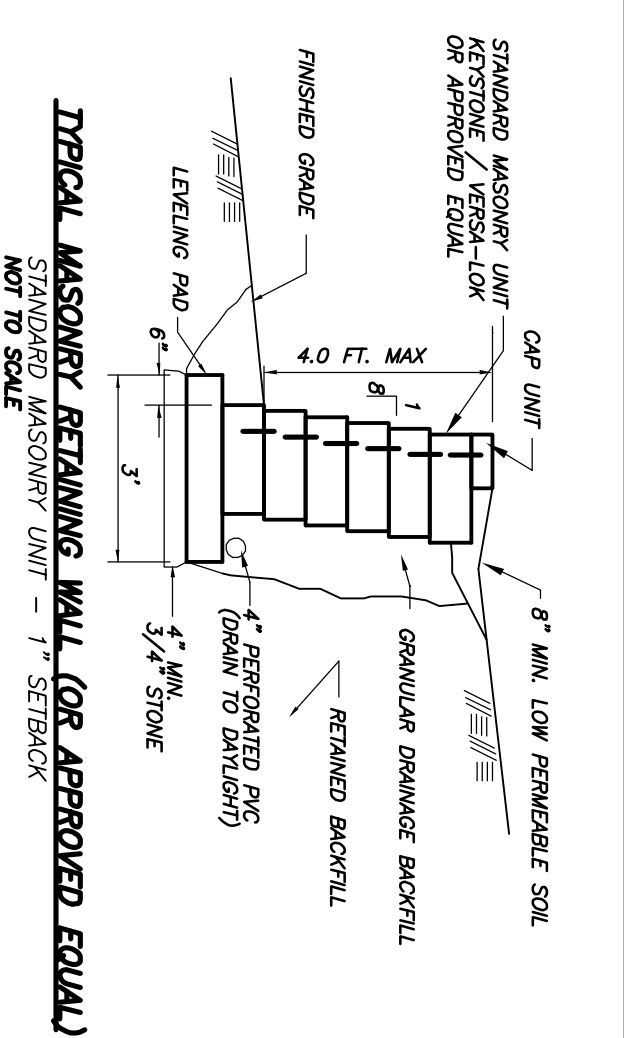
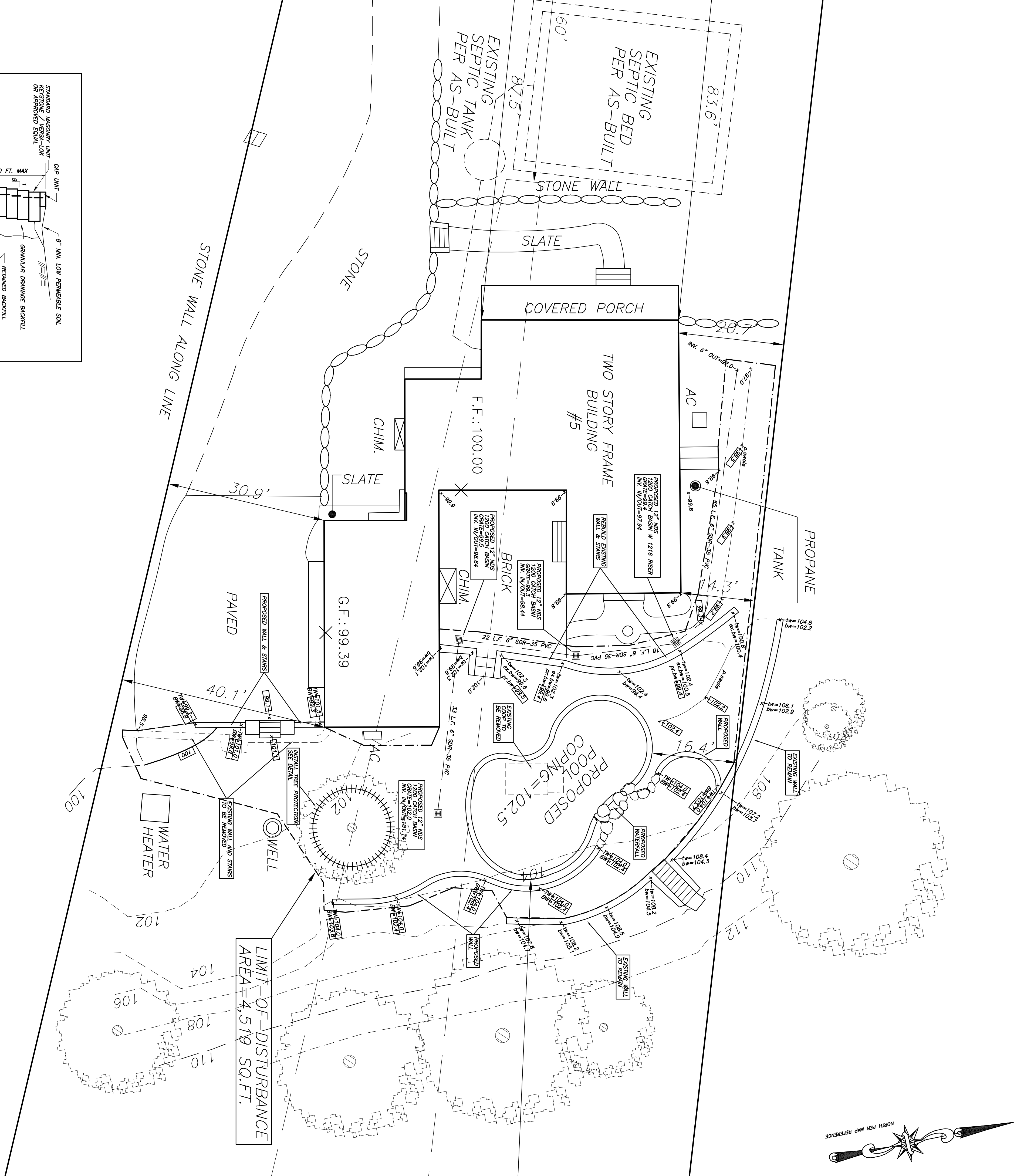
1. ALL SOIL EROSION AND SEDIMENT CONTROL PRACTICES WILL BE INSTALLED IN ACCORDANCE WITH THE NEW JERSEY SOIL CONSERVATION DISTRICT EROSION AND SEDIMENT CONTROL MANUAL, REV. JAN. 2008.
2. ANY DISTURBED AREA THAT WILL BE LEFT EXPOSED FOR MORE THAN THIRTY (30) DAYS AND NOT SUBJECT TO CONSTRUCTION TRAFFIC SHALL IMMEDIATELY RECEIVE A DISTURBED AREA RESTORATION PLAN. DISTURBED AREAS WILL BE MULCHED OR HAY AND TACKED IN ACCORDANCE WITH THE NEW JERSEY STANDARDS. SEE NOTE 21 BELOW.
3. PERMANENT VEGETATION IS TO BE ESTABLISHED ON EXPOSED AREAS WITHIN TEN (10) DAYS AFTER FINAL GRADING. MULCH IS TO BE USED FOR PROTECTION UNTIL VEGETATION IS ESTABLISHED. SEE NOTE 22 BELOW.
4. IMMEDIATELY FOLLOWING INITIAL DISTURBANCE OR ROUGH GRADING, ALL CRITICAL AREAS (STEEP SLOPES, SANDY SOILS, WET CONDITIONS) SUBJECT TO EROSION WILL RECEIVE A TEMPORARY SEEDING IN ACCORDANCE WITH NOTE 21 BELOW.
5. ROADWAYS AND DRIVEWAYS SHALL BE MULCHED WITH STRAW OR HAY AT ALL GRADES, ROADWAYS AND DRIVEWAY AREAS. SEE THE DIVISION DETAIL.
6. PERMANENT SEEDING AND STABILIZATION TO BE IN ACCORDANCE WITH THE SPECIFIED RATES AND LOCATIONS SHALL BE ON THE APPROVED SOIL EROSION AND SEDIMENT CONTROL PLAN.
7. THE SITE SHALL AT ALL TIMES BE GRADED AND MAINTAINED SO THAT ALL STORMWATER RUNOFF IS DIVERGED TO SOIL EROSION AND SEDIMENT CONTROL PRACTICES.
8. ALL SEDIMENTATION STRUCTURES (SILT FENCE, INLET FILTERS, AND SEDIMENT BASINS) WILL BE INSPECTED AND MAINTAINED DAILY.
9. STOCKPILES SHALL NOT BE LOCATED WITHIN 50' OF A FLOODPLAIN, SLOPE DRAINAGE FACILITY, OR ROADWAY. ALL STOCKPILES BASES SHALL HAVE A SILT FENCE PROPERLY ENCHANCED AT THE TOE OF SLOPE.
10. A STABILIZED CONSTRUCTION ACCESS WILL BE INSTALLED, WHENEVER AN EXISTING ROAD INTERFERES WITH A PAVED ROAD. SEE THE STABILIZED CONSTRUCTION ACCESS DETAIL AND SHEET FOR DIMENSIONS.
11. ALL NEW ROADWAYS WILL BE TREATED WITH SUITABLE SUBBASE UPON ESTABLISHMENT OF FINAL GRADE ELEVATIONS.
12. PAVED ROADWAYS MUST BE KEPT CLEAN AT ALL TIMES.
13. BEFORE DISCHARGE POINTS BECOME OPERATIONAL, ALL STORM DRAINAGE OUTLETS WILL BE STABILIZED AS REQUIRED.
14. ALL DUMPING OPERATIONS MUST BE DISCHARGED DIRECTLY INTO A SEDIMENT FILTER AREA. THE FILTER SHOULD BE COMPOSED OF A FABRIC OR APPROVED MATERIAL. SEE THE DETAILED DETAIL.
15. ALL SEDIMENT BASINS WILL BE CLEANED WHEN THE CAPACITY HAS BEEN REDUCED BY 50%. A CLEAN OUT ELEVATION WILL BE IDENTIFIED ON THE PLAN AND A MARKER INSTALLED ON THE SITE.
16. DURING AND AFTER CONSTRUCTION, THE APPLICANT WILL BE RESPONSIBLE FOR THE MAINTENANCE AND UPGRADE OF THE DRAINAGE STRUCTURES, VEGETATION COVER, RESPONSIBILITY WILL END WHEN COMPLETED WORK IS APPROVED BY THE MORRIS COUNTY SOIL CONSERVATION DISTRICT.
17. ALL TREES OUTSIDE THE DISTURBANCE LIMIT INDICATED ON THE SUBJECT PLAN OR THOSE TREES WITHIN THE DISTURBANCE AREA WHICH ARE DESIGNATED TO REMAIN AFTER CONSTRUCTION ARE TO BE PROTECTED WITH TREE PROTECTION DEVICES. SEE THE TREE PROTECTION DETAIL.
18. THE MORRIS COUNTY SOIL CONSERVATION DISTRICT MAY REQUEST ADDITIONAL CONSTRUCTION.
19. THE MORRIS COUNTY SOIL CONSERVATION DISTRICT MUST BE NOTIFIED IN WRITING AT LEAST 72 HOURS BEFORE ANY LAND DISTURBANCE, AND A PRE-CONSTRUCTION MEETING HELD.
20. CONTRACTOR TO SET UP A MEETING WITH THE INSPECTOR FOR PERIODIC INSPECTIONS OF THE TEMPORARY SEDIMENT BASIN PRIOR TO AND DURING ITS CONSTRUCTION.
21. **TOPSOIL STOCKPILE PROTECTION**
 - a) APPLY GROUND LIMESTONE AT A RATE OF 90 LBS PER 1000 SQ. FT.
 - b) APPLY FERTILIZER (10-20-10) AT A RATE OF 11 LBS. PER 1000 SQ. FT.
 - c) APPLY PERENNIAL PREGRASS SEED AT 1 LB. PER 1000 SQ. FT. AND
 - d) MULCH STOCKPILE WITH STRAW OR HAY AT A RATE OF 90 LBS. PER 1000 SQ. FT.
 - e) APPLY A LIQUID MULCH BINDER OR TACK TO STRAW OR HAY MULCH.
 - f) PROPERLY ENHANCE A SILT FENCE AT THE BOTTOM OF THE STOCKPILE.
22. **TEMPORARY STABILIZATION SPECIFICATIONS**
 - a) APPLY GROUND LIMESTONE AT A RATE OF 90 LBS PER 1000 SQ. FT.
 - b) APPLY FERTILIZER (10-20-10) AT A RATE OF 11 LBS. PER 1000 SQ. FT.
 - c) APPLY PERENNIAL PREGRASS SEED AT 1 LB. PER 1000 SQ. FT. AND
 - d) MULCH STOCKPILE WITH STRAW OR HAY AT A RATE OF 90 LBS. PER 1000 SQ. FT.
 - e) APPLY A LIQUID MULCH BINDER OR TACK TO STRAW OR HAY MULCH.
23. **PERMANENT STABILIZATION SPECIFICATIONS**
 - a) APPLY TOPSOIL TO A DEPTH OF 5 INCHES (UNSETTLED).
 - b) APPLY GROUND LIMESTONE AT A RATE OF 90 LBS PER 1000 SQ. FT. AND
 - c) APPLY FERTILIZER (10-20-10) AT A RATE OF 11 LBS. PER 1000 SQ. FT.
 - d) APPLY HARD RESCUE SEED AT 2.7 LBS. PER 1000 SQ. FT. AND CHEERING RED RESCUE SEED AT 0.7 LBS. PER 1000 SQ. FT. AND PERENNIAL PREGRASS SEED AT 1 LB. PER 1000 SQ. FT. AND PERENNIAL
 - e) MULCH STOCKPILE WITH STRAW OR HAY AT A RATE OF 90 LBS. PER 1000 SQ. FT.
 - f) APPLY A LIQUID MULCH BINDER OR TACK TO STRAW OR HAY MULCH.
 - g) APPLY A LIQUID MULCH BINDER OR TACK TO STRAW OR HAY MULCH.

DUST CONTROL NOTES

- THE FOLLOWING METHODS SHOULD BE CONSIDERED FOR CONTROLLING DUST:
- MULCHES - SEE STANDARDS FOR STABILIZATION WITH MULCHES ONLY (PG. 5-1).
 - VEGETATIVE COVER - SEE STANDARDS FOR TEMPORARY VEGETATIVE COVER (PG. 7-1), PERMANENT VEGETATIVE COVER FOR SOIL STABILIZATION (PG. 4-1), AND PERMANENT STABILIZATION WITH SOD (PG. 6-1).
 - SPRAY ON ADHESIVES - ON MINERAL SOILS (NOT EFFECTIVE ON CLAY SOILS). KEEP TRAFFIC OFF THESE AREAS.

MATERIAL	WATER DILUTION	TYPE OF NOZZLE	APPLY GALLONS/ACRE
ANIONIC ASPHALT EMULSION	7:1	COARSE SPRAY	1,200
LATEX EMULSION	12.5:1	FINE SPRAY	235
RESIN IN WATER	4:1	FINE SPRAY	300
POLYACRYLAMIDE (PAM) - SPRAY ON POLYACRYLAMIDE (PAM) - DRY SPRAY	NONE	COARSE SPRAY	1200

ACCUMLATION SOY BEAN SOAP SLICK
MULCHAGE - TO ROUGHEN SURFACE AND BRING CLODS TO THE SURFACE. THIS IS A TEMPORARY EMERGENCY MEASURE WHICH SHOULD BE USED BEFORE SOIL BLOWING STARTS. BEGIN PLOWING ON WINDWARD SIDE OF SITE. COVER-THE PLOWS SPACED ABOUT 12 INCHES APART, AND SPRING-TOOTHED HARROWS ARE EXAMPLES OF EQUIPMENT WHICH MAY PRODUCE THE DESIRED EFFECT.
SPRINKLING - SITE IS SPRINKLED UNTIL SURFACE IS WET.
BARRIERS - SOLO BOARD FENCES, SNOW FENCES, BRIDLE FENCES, GRATE WALLS, BALES OF HAY, AND SIMILAR MATERIAL CAN BE USED TO CONTROL AIR CURRENTS AND SOIL BLOWING.
CALCULUS CHANGE - SHALL BE IN THE FORM OF LARGE GRAY GRANULES OR PLANKS ONE INCH THICK THROUGH COMMONLY USED SPREADERS AT A RATE THAT WILL KEEP SURFACE MOIST BUT NOT CAUSE POLLUTION OR PLANT DAMAGE. IF USED ON STEEPER SLOPES, THEN USE OTHER PRACTICES TO PREVENT WASHING INTO STREAMS OR ACCUMULATION AROUND PLANTS.
STONE - COVER SURFACE WITH CRUSHED STONE OR COARSE GRAVEL.



YAMACCONE & ALDRICH, LLC
Civil Engineers & Land Surveyors
460 MAIN STREET, P.O. BOX 459
CHESTER, NEW JERSEY 07930
PHONE: 908-879-6646
FAX: 908-879-8991
N.J. STATE BOARD FOR P.E. & P.L.S. CERTIFICATE OF AUTHORIZATION NO. 26A07934000

BETZLER PROPERTY
5 WOODLAWN TERRACE
LOT 26 ~ BLOCK 127
TOWNSHIP OF MENDHAM
MORRIS COUNTY, NEW JERSEY

SHEET TITLE:
LARGE SCALE PLAN VIEW

NO. DATE REVISION

PROJECT TITLE:
BETZLER PROPERTY

DATE: 1/6/23
BY: RAN L. SMITH
NEW JERSEY LICENSED PROFESSIONAL ENGINEER AND LAND SURVEYOR NO. 3842575
NOT VALID WITHOUT SIGNATURE AND RASSED SEAL

FILE NAME: M:\SERVING\2023\20230122\101\221101
FILE NAME: 1078-AW-DWG

CHECKED BY: AS SHOWN
SCALE: AS SHOWN

W.O. 221101.2
F.B. 776/26

DATE: JANUARY 6, 2023

DRAWN BY: JMK/RS

SHEET 3 OF 3